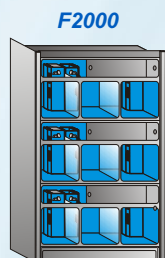


F2000 FRESHWATER FISH DISPLAY UNITS

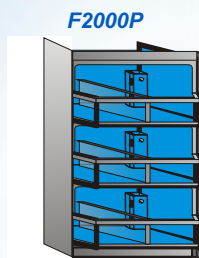
Create an enhanced selling environment with our Freshwater Livestock units. Designed to create maximum livestock display with minimum floor space used. Water is purified with proven D.A.S. air-driven filtration. Quality constructed with glass and ABS plastic for a durable unit without the high price tag.

F2000 All Units

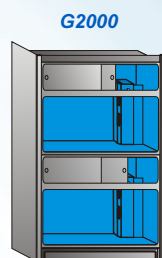
- * 52" x 20" x 90" (26" floor space needed)
- * 195 to 225 gallons per unit capacity
- * 2 Light Fixtures w/waterproof End caps each level.
- * Air driven by optional central Air Blower
- * Effective filtration in each tank with DAS Bio Spools
- * Self contained setup w/ Fill & Drain system
- * Easy water management with optional DAS Control and or Service Stations
- * Minimal Plumbing / Electrical requirements
- * Easy & Quick installation



F2000
75 gallons per layer
& 223 per unit



F2000P
65 gallons per layer
& 195 per unit



G2000
110 gallons per layer
& 220 per unit



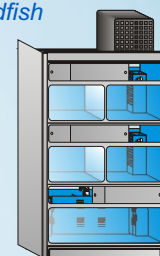
G2000/Large

With this unique design we can offer the largest per tank capacity units on the market. Now you can display large fish such as cichlids and Koi while creating a spectacular eye-catcher sure to get the customers attention.

F2000 units are also available for Amphibians and Feeder / Goldfish



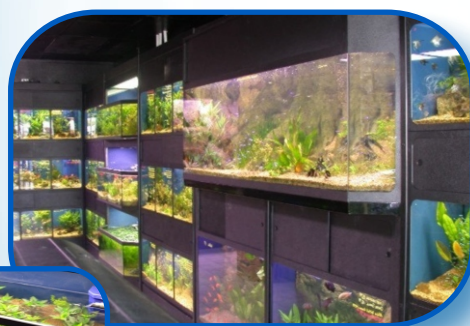
ASU
Amphibian



FSU
Feeder or
Goldfish

F2000P Plant-Koi

A unique, innovative open display for plants, goldfish or turtles. The hex part of the unit stands out creating an impressive look.



BETTA Wall Unit

Beautiful display of your Betta fish with 48 individual cups. The design of these stations is consistent with all DAS units as far as sizes and materials. The units are built out of high quality plywood laminated with ABS.

- * May be used as end cap to an isle or between fish units.
- * Durable counter top and stainless steel sink provide ample workspace for bagging, cleaning & maintenance.
- * Easy water changes with removable cups
- * Additional storage space for at least 100 cups.

